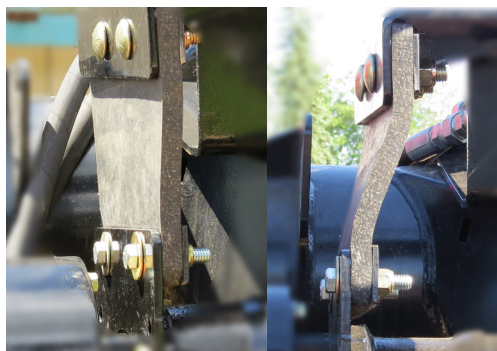
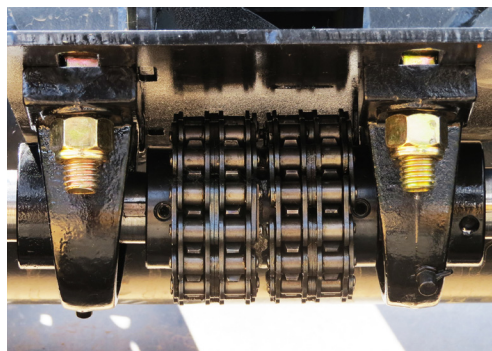


- **Compatible with both Flex and Rigid Drapers**
- **Universal fit** (our 40' auger fits ALL MacDon 40' FD and D headers from the past 15 yrs)
- **Patent-pending Flex-End™ design eliminates grease at center coupling**
- **Center Chain Coupler eliminates high-wear parts** (u-joint, rubber mount, etc.)



FLEX-END™ TECHNOLOGY

Our patent-pending Flex-End™ design utilizes a multi-cord bonded rubber connection between header and auger that allows the auger to seamlessly follow the movement of the header.



CENTER CHAIN COUPLER

The Flex-End™ eliminates the need for the center coupling to have high-wear parts like a u-joint and rubber mount. We use a grease-less chain coupler that is low-maintenance and reliable.



ANGLED STRIPPER BAR

Our patented Angled Stripper Bar comes with each auger kit. It deflects crop into the auger flighting and promotes the fastest flow.



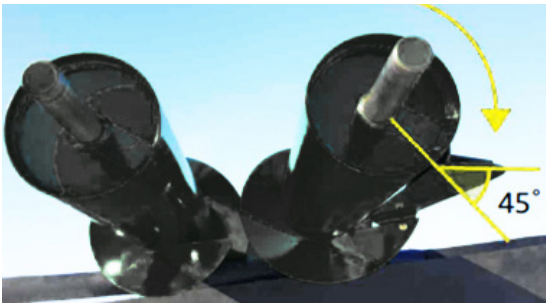
FULL LENGTH AUGER

Our Cross Auger spans the whole length of the header.

Moves lodged crop from the ends to the center of the header.

Blocks lodged crops from passing over the top of the header, increasing your yield and preventing over-stressed drives and sieves.

When swathing, our auger increases speeds while improving the shape of the swath.



CENTER PADDLES

45° swept back unloading paddles push crop into the bullet or finger auger. Competing augers with straight paddles will wrap crop on the auger.

Paddles removed on left auger to leave a smooth surface for optimal use in all conditions

- Auger kits for **ALL MAKES, MODELS AND LENGTHS** of swather and combine headers
- Augers are 6" OD pipe with a full 3" high flighting
- Coarser 16" pitch allows reduced rpm and **ELIMINATES** wrapping **IN ALL CONDITIONS**
- Hydraulic Driven augers with independent motor speed control
- Complete bolt-on kits make for **fast installs** on all models
- Urethane paint provides **long-lasting shine** to match your new harvester

